



WORK
PASSION
**MADE
IN ITALY**

INDICE

INDEX

1969-2019 2/3
50 ANNI INSIEME
50 YEARS TOGETHER

MOOD 4/32
COLLEZIONI/COLLECTION

GIACCHE CUCINA 38/85
KITCHEN JACKETS

PANTALONI CUCINA 86/103
KITCHEN PANTS

ECONOMIC LINE 104/105

GREMBIULI CUCINA 106/159
& RISTORAZIONE
KITCHEN & SERVICE APRON

ACCESSORI 160/195
RISTORAZIONE
& CUCINA
SERVICE & KITCHEN
ACCESSORIES

CASACCHE & CAMICI 196/204
COAT & OVERALLS

PACKAGING 206
PRODOTTO/PRODUCT

TABELLA TAGLIE 207
SIZE CHART

NORME DI LAVAGGIO 208
WASHING/INSTRUCTIONS



1969-2019

Ci mettiamo il Cuore, da 50 anni, ispirati e guidati dal cuore di **Maria Toni**, che ha iniziato e scritto questa storia. Abbiamo sognato, progettato e fatto-in-Italia. Abbiamo spedito le nostre **YOUuniform** alla conquista del mondo e siamo felici che siano scelte per accompagnarvi nel vostro lavoro. Siamo qui per continuare a condividere il nostro World Wide Made in Italy. E anche il sorriso e la passione, che non hanno età!

*A labour of Love: that's how it has been for 50 years, inspired and guided by **Maria Toni's** heart, starting and writing this story. We are our dreams turned into projects, made in Italy. We launched our **YOUuniforms** to take on the world and we are happy they are chosen to be your everyday work "partner". We are here to keep on sharing our World Wide Made in Italy. And our smile and passion too, which are timeless!*































**GIACCHE
CUCINA**

KITCHEN
JACKETS

GIACCHE JACKETS MICROFIBRE



IDROREPELENTE
WATER PROOF

**BOTTONI A
PRESSIONE**
SNAP BUTTONS



VICTOR **PAG. 40/41**



ALAN **PAG. 44/45**



NORA **PAG. 46/47**

**APERTURA
RAPIDA**
EASY OPENING



RIAN **PAG. 42/43**

GIACCHE JACKETS POLYESTER & COTTON

APERTURA RAPIDA
EASY OPENING



FAST **PAG.52/53**

BOTTONI ESTRAIBILI
REMOVABLE BUTTONS



GIOTTO **PAG. 56/57**

BOTTONI A PRESSIONE
SNAP BUTTONS



KING **PAG.54/55**



EVEREST **PAG. 58/59**



DIOR **PAG. 60/61**



GRANADA **PAG. 62/63**



OMEGA **PAG. 64/65**



ELETTRA **PAG.76/77**



RIO **PAG. 66/67**

GIACCHE JACKETS COTTON

**BOTTONI A
PRESSIONE**
SNAP BUTTONS

**BOTTONI
ESTRAIBILI**
REMOVABLE
BUTTONS



GORDON **PAG. 48/49**



100 GRAMS **PAG. 50/51**



IBIZA **PAG. 75**



YUMA **PAG. 80/81**



FRIDA **PAG. 82/83**



MALAGA **PAG. 88/89**



MAVI **PAG. 68/69**



ATLAS **PAG. 70**



EUROPA **PAG. 71**



CHEF **PAG. 72/73**



MADRID **PAG. 74**



ATLANTA **PAG. 78**



PACIFIC **PAG. 79**



ECONOMIC LINE **PAG. 104**



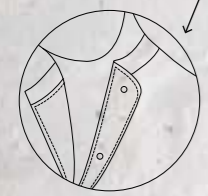
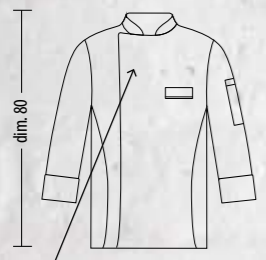
VICTOR UNISEX

Giacca con taschino sul petto e sulla manica sinistra; rete di areazione sulla parte posteriore; bottoni a pressione.
Jacket with breast and left sleeve pockets; aeration net on rear; snap buttons.

Tessuto: microfibra 100%
Fabric: microfibre 100%
Taglie/Size: XS, S, M, L, XL, XXL, XXXL

Mod. 1630_Bianco/White
Mod. 1631_Nero/Black

(gr. 110 mq)



BOTTONI NON A CONTATTO CON LA PELLE
NO METAL ON THE SKIN



TRASPIRANTE
BREATHABLE





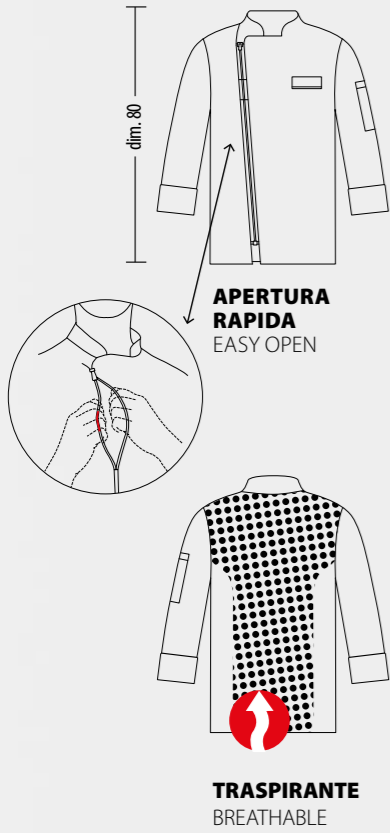
RIAN UNISEX

Giacca con taschino sul petto e sulla manica sinistra;
rete di areazione sulla parte posteriore;
lampo apertura rapida.
*Jacket with breast and left sleeve pockets;
aeration net on rear; easy opening zip.*

Tessuto: microfibra 100%
Fabric: microfibre 100%
Taglie/Size: XS, S, M, L, XL, XXL, XXXL

Mod. 1632_Bianco/White
Mod. 1633_Nero/Black

(gr. 110 mq)





ALAN UNISEX

Giacca con taschino sul petto e sulla manica sinistra; rete di areazione sulla parte posteriore; bottoni a pressione.
Jacket with breast and left sleeve pockets; aeration net on rear; snap buttons.

Tessuto: microfibra 100%
Fabric: microfibre 100%
Taglie/Size: XS, S, M, L, XL, XXL, XXXL

Mod. 1634 Bianco/White
Mod. 1635 Nero/Black

(gr. 110 mq)





NORA UNISEX

Giacca con taschino sulla manica sinistra;
rete di areazione sulla parte posteriore;
bottoni a pressione.
*Jacket with left sleeve pockets;
aeration net on rear; snap buttons.*

Tessuto: microfibra 100%
Fabric: microfibre 100%
Taglie/Size: XS, S, M, L, XL, XXL

Mod. 1636 Bianco/White
Mod. 1637 Nero/Black

(gr. 110 mq)



**BOTTONI NON
A CONTATTO
CON LA PELLE**
NO METAL
ON THE SKIN

TRASPIRANTE
BREATHABLE



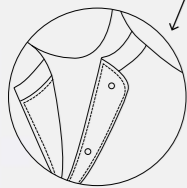
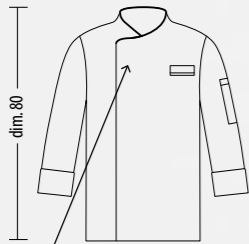


GORDON UNISEX

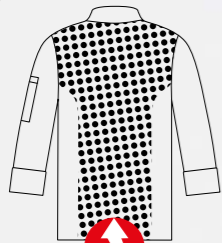
Giacca con taschino sul petto e sulla manica sinistra; rete di areazione sulla parte posteriore; bottoni a pressione.
Jacket with breast and left sleeve pockets; aeration net on rear; snap buttons.

Tessuto: cotone 100%
Fabric: cotton 100%
Taglie/Size: XS, S, M, L, XL, XXL, XXXL

Fantasia/Patterned (gr. 200 mq)
Mod. 1644 Supereroi/Superheroes
Mod. 1645 Teschio/Skull
Mod. 1646 Italia/Italy



BUTTONI NON A CONTATTO CON LA PELLE
NO METAL ON THE SKIN



TRASPIRANTE
BREATHABLE





Bianchi
White



Colorati
Colored



100 GRAMS UNISEX

Giacca con taschino sulla manica sx; bottoni a pressione;
rete di aereazione sulla parte posteriore.
*Jacket with left sleeve pockets; snap buttons;
aeration net on rear.*

Tessuto: cotone 100%

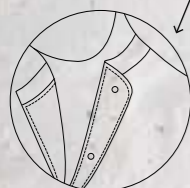
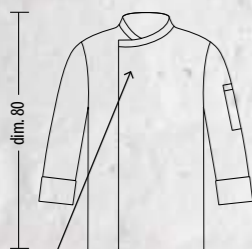
Fabric: cotton 100%

Taglie/Size: XS, S, M, L, XL, XXL, XXXL

Mod.1613 _Bianco/White

Mod.1614 _Nero/Black

(gr. 100 mq)



**BOTTONI NON
A CONTATTO
CON LA PELLE**
NO METAL
ON THE SKIN



TRASPIRANTE
BREATHABLE



FAST UNISEX



Bianchi
White



Colorati
Colored



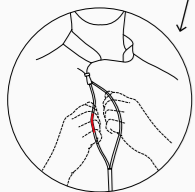
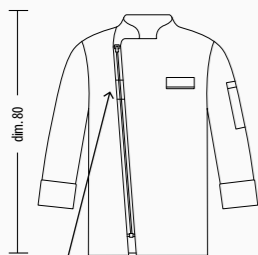
Giacca con taschino sul petto e sulla manica sinistra; lampo apertura rapida.
Jacket with breast and left sleeve pockets; easy opening zip.

Tessuto: poliestere 65% - cotone 35%
Fabric: polyester 65% - cotton 35%
Taglie/Size: XS, S, M, L, XL, XXL, XXXL

Mod.1546 Bianco/White
Mod.1547 Nero/Black
Mod.1610 Grigio/Grey

(gr. 195 mq)

**EASY
OPENING
UNISEX**





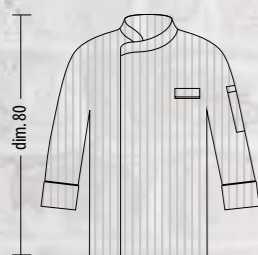
KING UNISEX

Giacca con taschino sul petto e sulla manica sinistra, bottoni a pressione.
Jacket with breast and left sleeve pocket, snap buttons.

Tessuto: poliestere 65% - cotone 35%
Fabric: polyester 65% - cotton 35%
Taglie/Size: XS, S, M, L, XL, XXL, XXXL

Mod.1530 Bianco/White
Mod.1531 Nero/Black

(gr. 210 mq)



95°
WASHING





- 95
- △
- ◻
- ◻
- Ⓟ

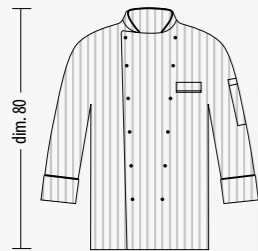
GIOTTO UNISEX

Giacca con taschino sul petto e sulla manica sinistra, bottoni estraibili.
Jacket with breast and left sleeve pocket, removable buttons.

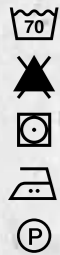
Tessuto: poliestere 65% - cotone 35%
Fabric: polyester 65% - cotton 35%
Taglie/Size: XS, S, M, L, XL, XXL, XXXL

Mod.1533 _Nero/Black
Mod.1532 _Bianco/White

(gr. 210 mq)



95°
WASHING



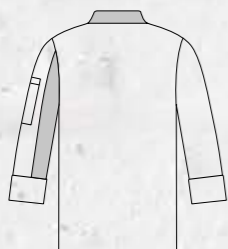
EVEREST UNISEX

Giacca con taschino sul petto e sulla manica sinistra; bottoni a pressione.
Jacket with breast and left sleeve pockets; snap buttons.

Tessuto: poliestere 65% - cotone 35%
Fabric: polyester 65% - cotton 35%
Taglie/Size: XS, S, M, L, XL, XXL, XXXL

Mod. 1560_Grigio-Rosso/Grey-Red
Mod. 1559_Nero-Grigio/Black-Grey

(gr. 195 mq)





Bianchi
White



Colorati
Colored



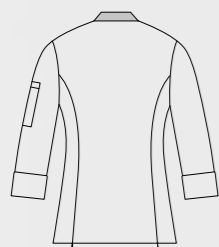
DIOR DONNA WOMAN

Giacca con taschino sulla manica sinistra; bottoni estraibili.
Jacket with left sleeve pockets; removable buttons.

Tessuto: poliestere 65% - cotone 35%
Fabric: polyester 65% - cotton 35%
Taglie/Size: XS, S, M, L, XL, XXL

Mod.1561 _Bianco/White
Mod.1562 _Nero/Black
Mod.1627 _Grigio/Grey

(gr. 195 mq)





Bianchi
White



Colorati
Colored



GRANADA UNISEX

Giacca con taschino sul petto e sulla manica sinistra; bottoni estraibili; rete di areazione ascellare.

Jacket with breast and left sleeve pockets; removable buttons; underarm aeration net.

Tessuto: cotone 60% - poliestere 40%

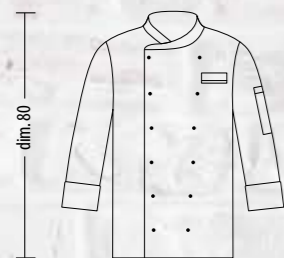
Fabric: cotton 60% - polyester 40%

Taglie/Size: XS, S, M, L, XL, XXL, XXXL

Mod.1453 Nero/Black

Mod.1452 Bianco/White

(gr. 200 mq)





OMEGA UNISEX



Bianchi
White



Colorati
Colored

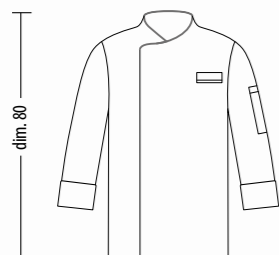


Giacca con taschino sul petto e sulla manica sinistra.
Bottoni a pressione, rete di areazione ascellare.
*Jacket with breast and left sleeve pocket.
Snap buttons, underarm aeration net.*

Tessuto: poliestere 65% - cotone 35%
Fabric: polyester 65% - cotton 35%
Taglie/Size: XS, S, M, L, XL, XXL, XXXL

Mod.1534 Bianco/White
Mod.1535 Nero/Black
Mod.1625 Grigio/Grey

(gr. 195 mq)





Bianchi
White



Colorati
Colored



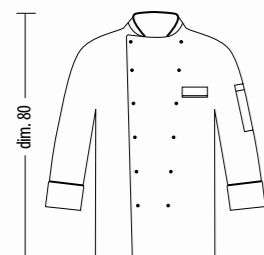
RIO UNISEX

Giacca con taschino sul petto e sulla manica sinistra; bottoni estraibili.
Jacket with breast and left sleeve pocket; removable buttons:

Tessuto: poliestere 65% - cotone 35%
Fabric: polyester 65% - cotton 35%
Taglie/Size: XS, S, M, L, XL, XXL, XXXL

Mod.1536 _Bianco/White
Mod.1537 _Nero/Black
Mod. 1587 _Grigio/Grey

(gr. 195 mq)





Bianchi
White



Colorati
Colored



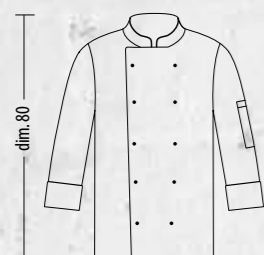
MAVI UNISEX

Giacca con taschino sulla manica sinistra;
rete di areazione sulla parte posteriore;
bottoni estraibili.
*Jacket with left sleeve pocket; aeration
net on rear; removable buttons.*

Tessuto: cotone 100%
Fabric: cotton 100%
Taglie/Size: XS, S, M, L, XL, XXL, XXXL

Mod.1351_Nero/Black
Mod.1350_Bianco/White

(gr. 195 mq)



TRASPIRANTE
BREATHABLE





ATLAS UNISEX

Giacca con taschino sulla manica sinistra; bottoni estraibili.
Jacket with left sleeve pocket; removable buttons.

Tessuto: cotone 100%
Fabric: cotton 100%
Taglie/Size: XS, S, M, L, XL, XXL, XXXL

Mod. 1585_Bianco/White

(gr. 195 mq)



EUROPA UNISEX

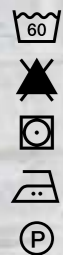
Giacca con taschino sulla manica sinistra; bottoni estraibili.
Jacket with left sleeve pocket; removable buttons.

Tessuto: cotone 100%
Fabric: cotton 100%
Taglie/Size: XS, S, M, L, XL, XXL, XXXL

Mod. 182_Bianco/White

(gr. 195 mq)





CHEF UNISEX

Giacca con taschino sulla manica sinistra; bottoni estraibili.
Jacket with left sleeve pocket; removable buttons.

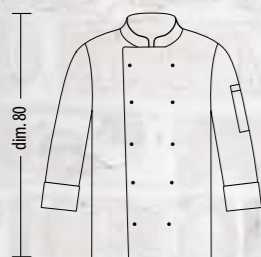
Tessuto: cotone 100%

Fabric: cotton 100%

Taglie/Size: XS, S, M, L, XL, XXL, XXXL

Mod. 283_Nero/Black

(gr. 195 mq)





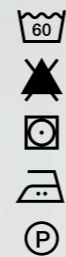
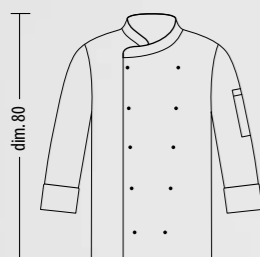
MADRID UNISEX

Giacca con taschino sulla manica sinistra; bottoni estraibili.
Jacket with left sleeve pocket; removable buttons.

Tessuto: cotone 100%
Fabric: cotton 100%
Taglie/Size: XS, S, M, L, XL, XXL, XXXL

Mod.184_Bianco/White

(gr. 195 mq)



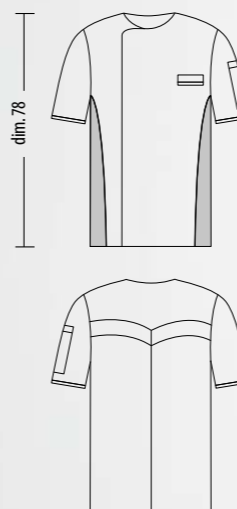
IBIZA UNISEX

Giacca con taschino sulla manica sinistra; bottoni a pressione.
Jacket with left sleeve pocket; snap buttons.

Tessuto: cotone 100%
Fabric: cotton 100%
Taglie/Size: XS, S, M, L, XL, XXL, XXXL

Mod. 1123_Bianco/White

(gr. 195 mq)





ELETTRA UNISEX

Giacca con taschino sul petto e sulla
manica sinistra; bottoni a pressione.
*Jacket with breast and left sleeve
pockets; snap buttons.*

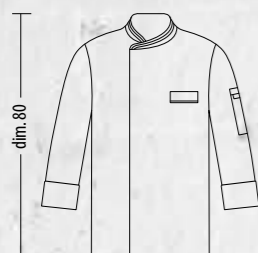
Tessuto: poliestere 65% - cotone 35%

Fabric: polyester 65% - cotton 35%

Taglie/Size: XS, S, M, L, XL, XXL, XXXL

Mod.1586 Blulette/Bright Blue

(gr. 195 mq)





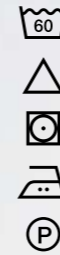
ATLANTA UNISEX

Giacca con taschino sulla manica sinistra; bottoni estraibili.
Jacket with left sleeve pocket; removable buttons.

Tessuto: cotone 100%
Fabric: cotton 100%
Taglie/Size: XS, S, M, L, XL, XXL, XXXL

Mod. 179 Bianco/White

(gr. 195 mq)



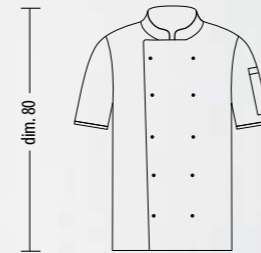
PACIFIC UNISEX

Giacca con taschino sulla manica sinistra; bottoni estraibili.
Jacket with left sleeve pocket; removable buttons.

Tessuto: cotone 100%
Fabric: cotton 100%
Taglie/Size: XS, S, M, L, XL, XXL, XXXL

Mod. 185 Bianco/White

(gr. 195 mq)





Bianchi
White



Colorati
Colored



YUMA UNISEX

Giacca con taschino sul petto e sulla manica sinistra; bottoni a pressione.
Jacket with breast and left sleeve pockets; snap buttons.

Tessuto: cotone 100%

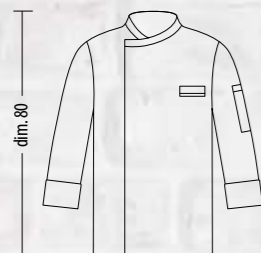
Fabric: cotton 100%

Taglie/Size: XS, S, M, L, XL, XXL, XXXL

Mod.1352 Bianco/White

Mod. 1353 Nero/Black

(gr. 195 mq)



TRASPIRANTE
BREATHABLE





Bianchi
White



Colorati
Colored



FRIDA DONNA WOMAN

Giacca con taschino sul petto e sulla
manica sinistra; bottoni a pressione.
*Jacket with breast and left sleeve
pockets; snap buttons.*

Tessuto: cotone 100%

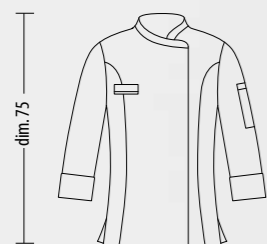
Fabric: cotton 100%

Taglie/Size: XS, S, M, L, XL, XXL

Mod.1334 Bianco/White

Mod.1335 Nero/Black

(gr. 195 mq)





MALAGA UNISEX

Giacca con taschino sul petto e sulla
manica sinistra; bottoni a pressione.
*Jacket with breast and left sleeve pockets;
snap buttons.*

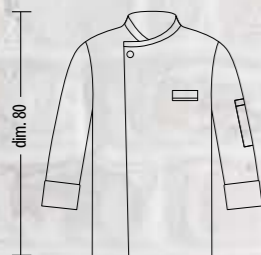
Tessuto: cotone 100%

Fabric: cotton 100%

Taglie/Size: XS, S, M, L, XL, XXL, XXXL

Mod.1448 _Beige/Beige

(gr. 185 mq)





SCOTT UNISEX



Pantalone con elastico in vita; tasche laterali (2) e posteriore (1).
Pants, elastic waist; side pockets (2) and back (1).

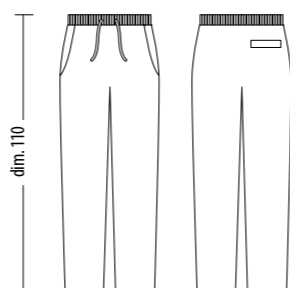
Tessuto: poliestere 65% - cotone 35%

Fabric: polyester 65% - cotton 35%

Taglie/Size: XS, S, M, L, XL, XXL, XXXL

- ① **Mod. 1549_Food**
- ② **Mod. 1550_Posate/Cutlery**
- ③ **Mod. 1551_Paprika**

(gr. 210 mq)





SCOTT UNISEX

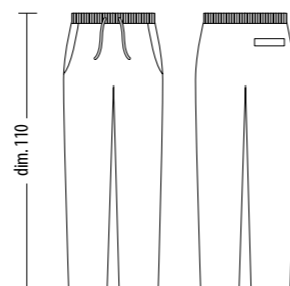


Pantalone con elastico in vita; tasche laterali (2) e posteriore (1).
Pants, elastic waist; side pockets (2) and back (1).

Tessuto: poliestere 65% - cotone 35%
Fabric: polyester 65% - cotton 35%
Taglie/Size: XS, S, M, L, XL, XXL, XXXL

- ① **Mod. 1552_Poker**
- ② **Mod. 1553_Mani/Hands**

(gr. 210 mq)



MILTON UNISEX

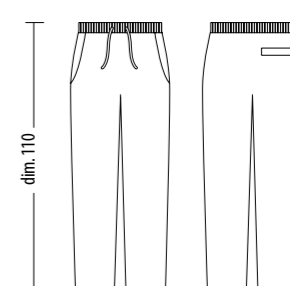


Pantalone con elastico in vita; tasche laterali (2) e posteriore (1).
Pants, elastic waist; side pockets (2) and back (1).

Tessuto: cotone 100%
Fabric: cotton 100%
Taglie/Size: XS, S, M, L, XL, XXL, XXXL

- ① **Mod. 1642_Game Over**
- ② **Mod. 1641_Supereroi/Superheroes**

(gr. 200 mq)





MILTON UNISEX



Pantalone con elastico in vita; tasche laterali (2) e posteriore (1).
Pants, elastic waist; side pockets (2) and back (1).

Tessuto: cotone 100%

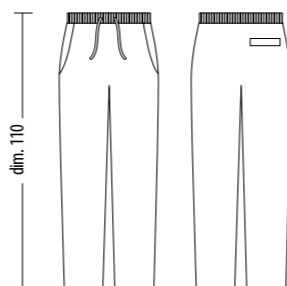
Fabric: cotton 100%

Taglie/Size: XS, S, M, L, XL, XXL, XXXL

① **Mod. 1457**_Diavoletto /Devil

② **Mod. 1456**_New York

(gr. 200 mq)



Mod. 187
Jeans



Mod. 1127
Città/City



Mod. 1129
Riga Bordeaux
Wine Red Stripe



Mod. 1132
Nero Fantasia
Black Patterned



Mod.286
Grigio Gessato
Pin Stripe Grey



Mod. 1126
Giornale
Newspaper



Mod. 1133
Bordeaux Fantasia
Wine Red Patterned



Bianchi
White



Colorati
Colored



ROBIN UNISEX

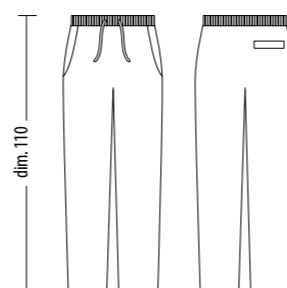


Pantalone con elastico in vita; tasche laterali (2) e posteriore (1).
Pants, elastic waist; side pockets (2) and back (1).

Tessuto: poliestere 65% - cotone 35%
Fabric: polyester 65% - cotton 35%
Taglie/Size: XS, S, M, L, XL, XXL, XXXL

Mod. 1574_Nero/Black
Mod. 1575_Rosso/Red
Mod. 1576_Giallo/Yellow
Mod. 1577_Bianco/White

(gr. 195 mq)





ASTRO UNISEX

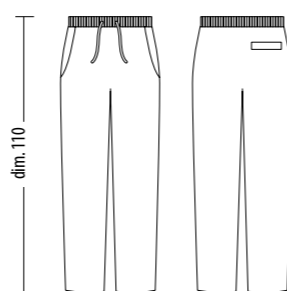


Pantalone con elastico in vita; tasche laterali (2) e posteriore (1).
Pants, elastic waist; side pockets (2) and back (1).

Tessuto: poliestere 50% - cotone 50%
Fabric: polyester 50% - cotton 50%
Taglie/Size: XS, S, M, L, XL, XXL, XXXL

Mod. 1580_ Principe di Galles/Prince of Wales Check
Mod. 1581_ Riga azzurra/Sky Blue Pin Stripe

(gr. 180 mq)



SIRIO UNISEX

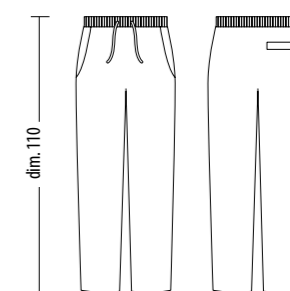


Pantalone con elastico in vita; tasche laterali (2) e posteriore (1).
Pants, elastic waist; side pockets (2) and back (1).

Tessuto: poliestere 65% - cotone 35%
Fabric: polyester 65% - cotton 35%
Taglie/Size: XS, S, M, L, XL, XXL, XXXL

Mod. 1458_ Nero Gessato / Black Pin Stripe
Mod. 1590_ Blu Gessato/Blue Pin Stripe

(gr. 190 mq)





OTEGO UNISEX

Bianchi
White

Colorati
Colored

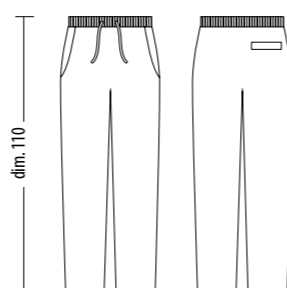


Pantalone con elastico in vita; tasche laterali (2) e posteriore (1).
Pants, elastic waist; side pockets (2) and back (1).

Tessuto: cotone 100%
Fabric: cotton 100%
Taglie/Size: XS, S, M, L, XL, XXL, XXXL

Mod. 195_Bianco/White
Mod. 1588_Nero/Black

(gr. 200 mq)



ISCHIA UNISEX

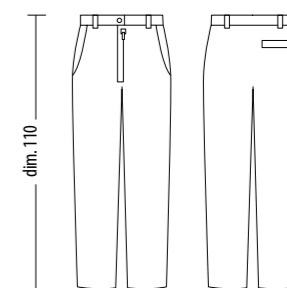


Pantalone con passanti in vita; tasche laterali (2) e posteriore (1); chiusura lampo con zip.
Pants belt loops; side pockets (2) and back (1); zip closure.

Tessuto: cotone 100%
Fabric: cotton 100%
Taglie/Size: XS, S, M, L, XL, XXL, XXXL

Mod. 189_Pied de Poule

(gr. 220 mq)





RENO UNISEX

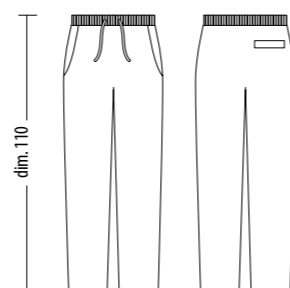


Pantalone con elastico in vita; tasche laterali (2) e posteriore (1).
Pants, elastic waist; side pockets (2) and back (1).

Tessuto: cotone 100%
Fabric: cotton 100%
Taglie/Size: XS, S, M, L, XL, XXL, XXXL

Mod. 287_Nero Quadri Bianchi/ *Black White Checks*

(gr. 180 mq)



CAPRI UNISEX

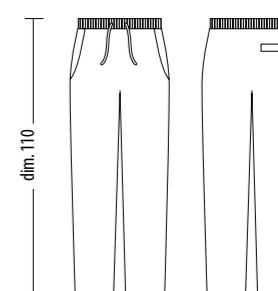


Pantalone con elastico in vita; tasche laterali (2) e posteriore (1).
Pants, elastic waist; side pockets (2) and back (1).

Tessuto: cotone 100%
Fabric: cotton 100%
Taglie/Size: XS, S, M, L, XL, XXL, XXXL

Mod. 188_Pied de Poule

(gr. 220 mq)



-
-
-
-
-
-

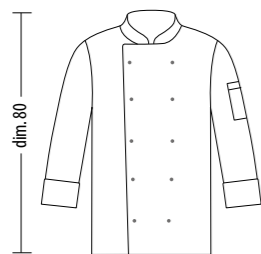
Bianchi
White

Colorati
Colored

ECONOMIC LINE UNISEX

Tessuto: cotone100%
Fabric: cotton 100%
Taglie/Size: XS, S, M, L, XL, XXL

Giacca con taschino sulla manica sinistra; bottoni estraibili.
Jacket with left sleeve pocket; removable buttons.



Mod. 1125
Bianco/White (gr. 200 mq)

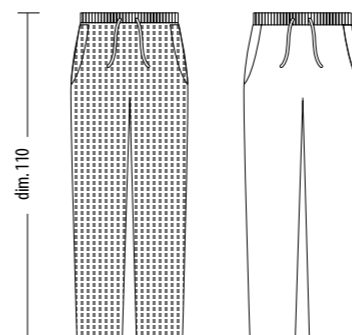
Mod. 1615
Nero/Black (gr. 200 mq)



Prodotto importato
Imported product

Pantalone con elastico in vita; tasche laterali (2) e posteriore (1).
Pants, elastic waist; side pockets (2) and back (1).

Tessuto: cotone100%
Fabric: cotton 100%
Taglie/Size: XS, S, M, L, XL, XXL



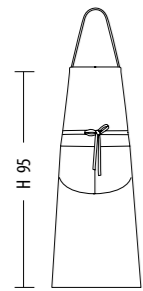
Mod. 1124 (gr. 230 mq)
Quadretto Bianco & Nero
Black & White checked

Mod.1545 (gr. 200 mq)
Bianco/White

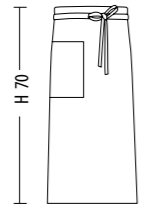
GREMBIULI CUCINA & RISTORAZIONE

KITCHEN
& SERVICE
APRON

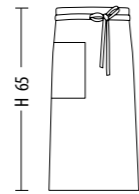
**100%
COTONE/COTTON**



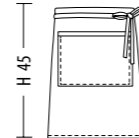
LIMA **PAG. 114-115**
DAYTON **PAG. 158**



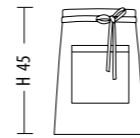
TORONTO
PAG. 158



VEGA
PAG. 112-113

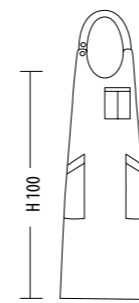


NEVADA
PAG. 110

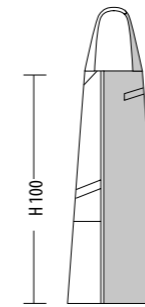


BARTON
PAG. 158

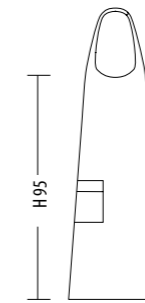
**100%
POLIESTERE/POLYESTER**



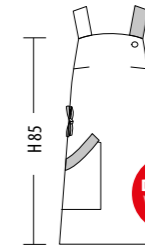
BISTROT
PAG. 122-123



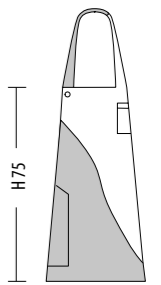
IMPERIAL
PAG. 133



FABIAN
PAG. 126-127

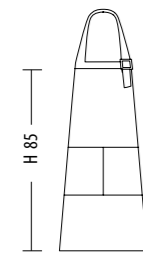


TELMA
PAG. 138-139

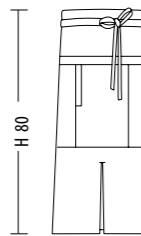


MADEIRA
PAG. 136-137

POLIESTERE & COTONE
POLYESTER & COTTON



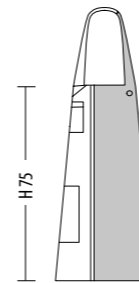
TIFFANY
PAG. 130-131



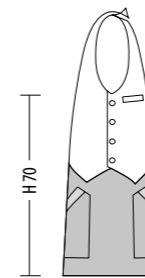
MORGAN
PAG. 124-125



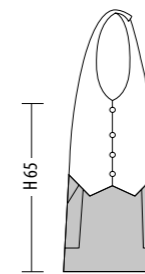
PVC
PAG. 159



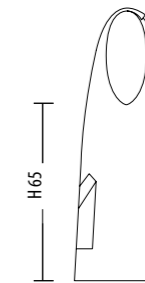
OSLO
PAG. 148-150



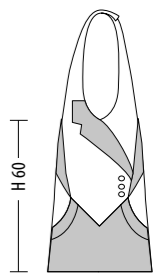
BRISTOL
PAG. 134/135



SIMON
PAG. 142-143

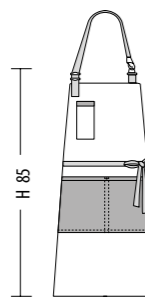


CIPRO
PAG. 140-141

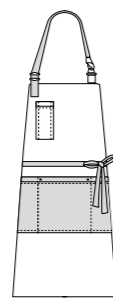


PANAREA
PAG. 146-147

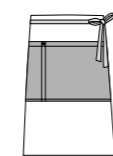
DENIM & ECOPELLE
DENIM &
ECO-LEATHER



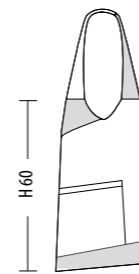
FREDDIE
PAG. 116-117



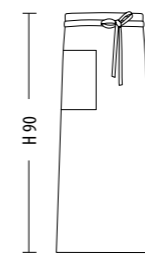
BRIAN
PAG. 119



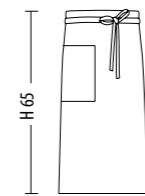
TORRES
PAG. 118



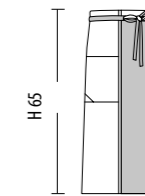
MALTA
PAG. 144-145



NIZZA
PAG. 128-129

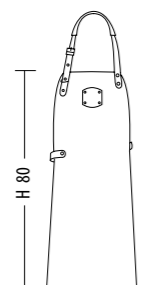


ARGO
PAG. 156-157

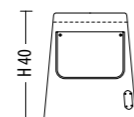


CARDIFF
PAG. 132

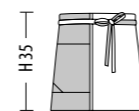
PELLE
LEATHER



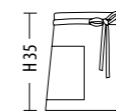
MAUI
PAG. 120



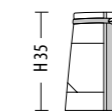
ORAMA
PAG. 121



ROGER
PAG. 151 -153



DAKOTA
PAG. 154-155



DENVER
PAG. 132

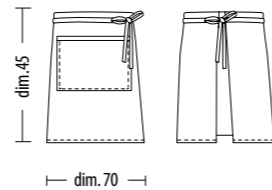


NEVADA UNISEX

Grembiule unisex
Unisex apron

Fantasia/Patterned (gr. 200 mq)
Gessati/Pin Stripe (gr. 190 mq)
Tinta Unita/One color (gr. 260 mq)

Tessuto: cotone 100%
Fabric: cotton 100%
Taglia unica / One Size Only



Mod. 1659
Teschio/Skull



Mod. 1660
Italia/Italy



Mod. 1661
Cucina/Kitchen



Mod. 1662
Supereroi/Superheroes



Mod. 1663
Game over



Mod. 1664
Black & White



Mod. 1665
Giornale/ Newspaper



Mod. 1666
Diavoletto /Devil



Mod. 1667
New York



Mod. 1668
Nero / Black



Mod. 1669
Nero Gessato
Black Pin Stripe



Mod. 1670
Blu Gessato
Blue Pin Stripe





VEGA UNISEX

Grembiule unisex/Unisex apron

Tessuto: cotone 100%

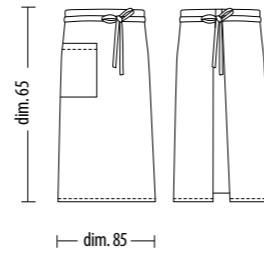
Fabric: cotton 100%

Taglia unica /One Size Only

Fantasia/Patterned (gr. 200 mq)

Gessati/Pin Stripe (gr. 190 mq)

Tinta Unita/One color (gr. 260 mq)



Mod. 1465
Diavoletto /Devil



Mod. 1466
New York



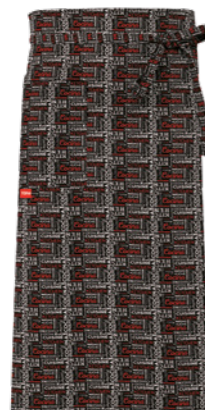
Mod. 1594
Giornale/ Newspaper



Mod. 1653
Teschio/Skull



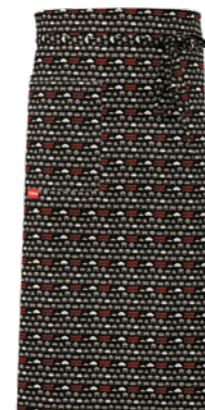
Mod. 1654
Italia/Italy



Mod. 1655
Cucina/Kitchen



Mod. 1656
Supereroi/Superheroes



Mod. 1657
Game over



Mod. 1658
Black & White



Mod. 1467
Nero Gessato
Black Pin Stripe



Mod. 1469
Rosso Gessato
Red Pin Stripe



Mod. 1593
Blu Gessato
Blue Pin Stripe

Mod. 1468 _Blu/ Blue

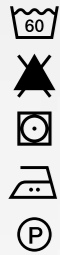
Mod. 1472 _Verdone/ Deep Green



Mod. 1470
Nero/ Black



Mod. 1471
Grigio/Grey

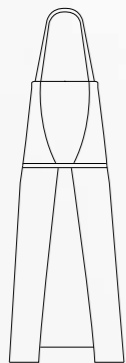
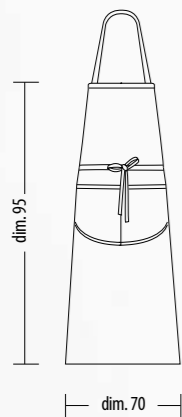


LIMA UNISEX

Tessuto: cotone 100%
Fabric: cotton 100%
Taglia unica / One Size Only

Fantasia/Patterned (gr. 200 mq)
Gessati/Pin Stripe (gr. 190 mq)
Tinta unita/One color (gr. 260 mq)

Mod. 1459
New York



Mod. 163
Blu/ Blue



Mod. 1462
Nero/Black



Mod. 1463
Grigio/Grey



Mod. 1464
Verdone/Deep Green



Mod. 162
Rosso Gessato
Red Pin Stripe



Mod. 1460
Nero Gessato
Black Pin Stripe



Mod. 1591
Blu Gessato
Blue Pin Stripe



Mod. 1461
Diavoletto/Devil



Mod. 1592
Giornale/ Newspaper



Mod. 1647
Teschio/Skull



Mod. 1648
Italia/Italy



Mod. 1649
Cucina/Kitchen



Mod. 1650
Supereroi
Superheroes



Mod. 1651
Game over



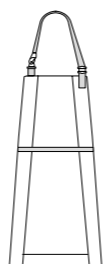
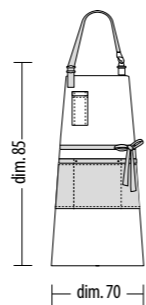
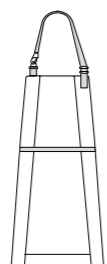
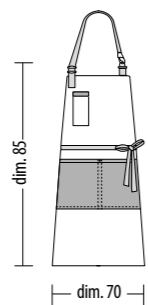
Mod. 1652
Black & White



FREDDIE UNISEX

Tessuto: Denim cotone 100% - Eco Pelle
Fabric: Denim cotton 100%- Eco Leather
Taglia unica /One Size Only

(9 once/ounce)



Mod. 1710

Denim nero con tasca in eco pelle nera.
Black denim with black eco leather pocket.

Mod. 1713

Denim blu, tasca con profili in eco pelle blu.
Blue denim, pocket with eco leather blue profiles.





TORRES UNISEX

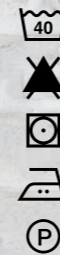
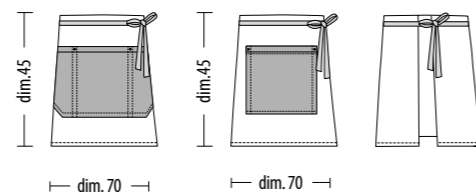


Tessuto: Denim cotone 100% - Eco Pelle
Fabric: Denim cotton 100%- Eco Leather
Taglia unica /One Size Only

Mod. 1712_ Denim nero con tasca in eco pelle nera.
Black denim with black eco leather pocket.

Mod. 1715_ Denim blu, tasca con profili in eco pelle blu.
Blue denim, pocket with eco leather blue profiles.

(9 once/ounce)



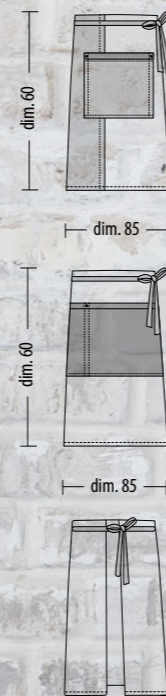
BRIAN UNISEX

Tessuto: Denim cotone 100% - Eco Pelle
Fabric: Denim cotton 100%- Eco Leather
Taglia unica /One Size Only

Mod. 1711
Denim nero con tasca in eco pelle nera.
Black denim with black eco leather pocket.

Mod. 1714
Denim blu, tasca con profili in eco pelle blu.
Blue denim, pocket with eco leather blue profiles.

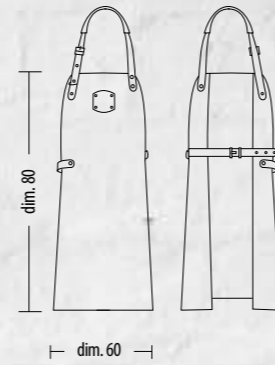
(9 once/ounce)



MAUI UNISEX

Grebiule unisex con collo regolabile, taglia unica.
Unisex apron with adjustable collar, one size only.

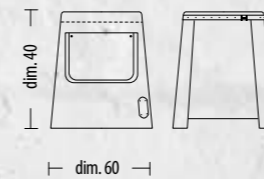
Mod. 1690_Marrone/ Brown
Mod. 1691_Blu/ Blue



ORAMA UNISEX

Grebiule unisex, taglia unica.
Unisex apron, one size only.

Mod. 1692_Marrone/ Brown
Mod. 1693_Blu/ Blue

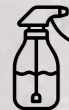


100%
Vera pelle.
Sostenibile
& resistente.
100%
Real leather
eco-friendly and
heavy-duty



Per la rimozione di
macchie, strofinare con
un panno umido o una
spazzola morbida.

*For stain removing,
rub with a damp cloth
or a soft brush.*



Utilizzare spray
repellente e
antimacchia
per pelle.
*Use stain and water
repellent colorless
leather spray.*



Non trattare
con benzina
o acetone!

*Never treat
with gasoline
or acetone!*





BISTROT UNISEX

Grebiule con collo regolabile con bottoni.
Apron with button adjustable collar.

Tessuto: poliestere 100%
Fabric: polyester 100%

Tinta unita/*One color*
(gr. 195 mq)

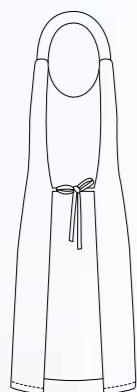
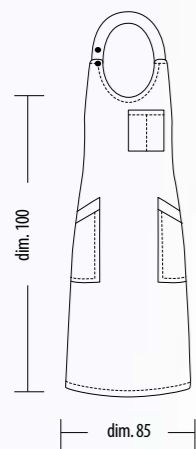
Mod. 1548
Nero/ *Black*

Mod. 1620
Marrone/ *Brown*

Gessato/*Pin Stripe*
(gr. 180 mq)

Mod. 275
Nero/ *Black*

Mod. 1063
Bordeaux /*Wine Red*





MORGAN UNISEX

Tessuto: poliestere 65% - cotone 35%

Fabric: polyester 65% - cotton 35%

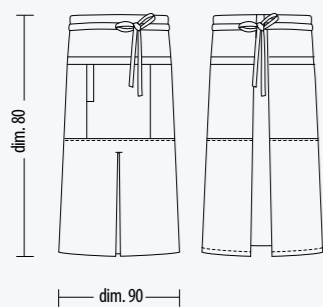
Taglia unica/One Size Only

Tinta unita/One color (gr. 210 mq)

Mod. 1584 _Marrone/ Brown

Mod. 1583 _Grigio/Grey

Mod. 1582 _Nero/Black



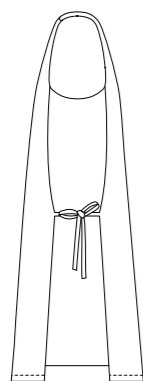
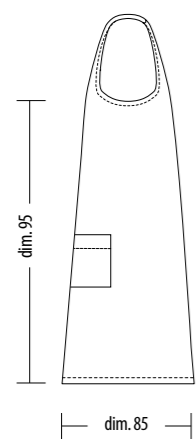


FABIAN UNISEX

Grebiule con collo regolabile con velcro.
Apron with velcro adjustable collar.

Tessuto: poliestere 100%
Fabric: polyester 100%
Taglia Unica/ One Size Only

Gessato/Pin Stripe (gr. 180 mq)
Tinta unita/One color (gr. 195mq)



Mod. 1065
Nero Gessato
Black Pin Stripe



Mod. 1066
Bordeaux Gessato
Wine Red Pin Stripe



Mod. 142
Bordeaux/ Wine Red



Mod. 143
Rosso/ Red



Mod. 144
Nero/ Black



Mod. 145
Bluette/ Bright blue



Mod. 146
Verdone/Deep Green



Mod. 1398
Blu/ Blue



Mod. 1399
Grigio/ Grey



Mod. 1621
Marrone/ Brown

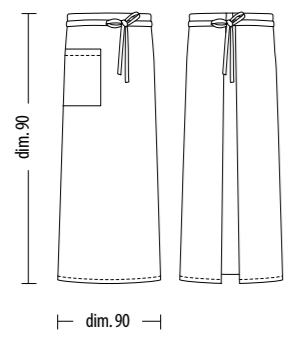




NIZZA UNISEX

Tessuto: poliestere 100%
Fabric: polyester 100%
Taglia unica / One Size Only

Tinta unita/One color (gr. 195 mq)
Gessati/Pin Stripe (gr. 180 mq)



Mod. 1067
Nero Gessato
Black Pin Stripe



Mod. 1068
Bordeaux Gessato
Wine Red Pin Stripe



Mod. 147
Bordeaux/Wine Red



Mod. 148
Nero/Black



Mod. 151
Rosso/Red





TIFFANY UNISEX

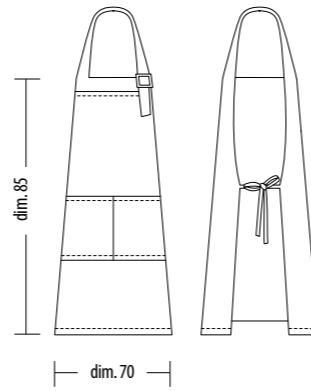
Grebiule con collo regolabile con fibbia.
Apron with buckle adjustable collar.

Tinta unita/One color (gr. 210 mq)

Tessuto: poliestere 65% - cotone 35%

Fabric: polyester 65% - cotton 35%

Taglia Unica/ One Size Only



Mod. 1078
Verdone/ Deep Green



Mod. 1079
Bordeaux/ Wine Red



Mod. 1081
Nero/ Black



Mod. 1421
Marrone/ Brown



Mod. 1422
Grigio/Grey



Mod. 1423
Blu/ Blue





CARDIFF & DENVER UNISEX

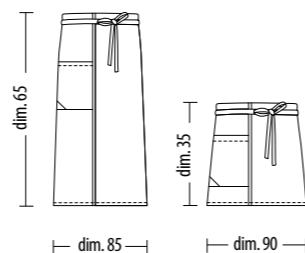


Doppio Colore: Grigio-Nero
Tessuto: poliestere 100%
Taglia unica

Double color: Grey-Black
Fabric: polyester 100%
One Size Only

(gr. 195 mq)

- ① **Cardiff**_Mod. 1396
- ② **Denver**_Mod. 1397



IMPERIAL UNISEX

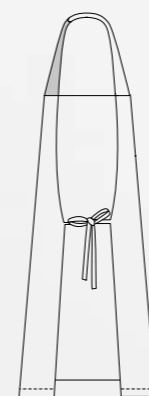
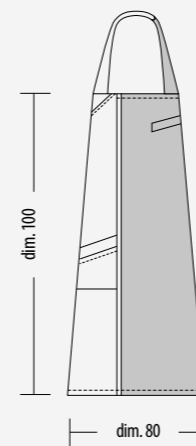
Grembiule con collo regolabile con velcro.
Apron with velcro adjustable collar.

Doppio Colore: Grigio-Nero
Tessuto: poliestere 100%
Taglia unica

Double color: Grey-Black
Fabric: polyester 100%
One Size Only

(gr. 195 mq)

Mod. 1395
Grigio-Nero
Grey -Black





BRISTOL UNISEX



Grembiule con collo regolabile con velcro.
Apron with velcro adjustable collar.

Tessuto: poliestere 100%
Fabric: polyester 100%
Taglia unica / One Size Only

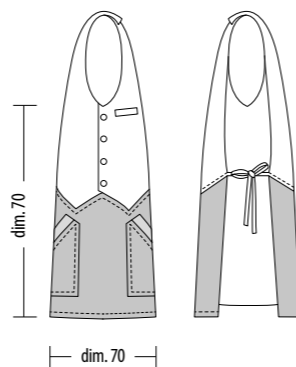
Doppio colore/Double color

① **Mod. 1404**
Crêpes/ Marrone - Crêpes/ Brown

② **Mod. 1405**
Caffè/ Marrone - Coffee/ Brown

③ **Mod. 1403**
Argento Gessato/ Grigio
Silver Pin Stripe/ Grey

④ **Mod. 1402**
Grigio-Nero/ Grey-Black



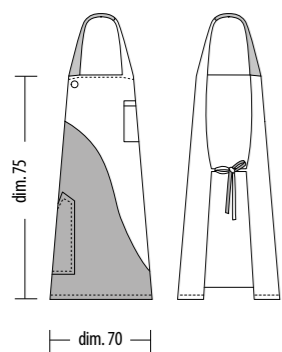


MADEIRA UNISEX

Grembiule con collo regolabile con velcro.
Apron with velcro adjustable collar.

Tessuto: poliestere 100%
Fabric: polyester 100%
Taglia unica / One Size Only

Doppio colore/Double color
(gr. 195 mq)



Mod. 1435
Nero Gessato - Rosso
Black Pin Stripe-Red



Mod. 1436
Viola- Giallo
Violet-Yellow



Mod. 1437
Blu- Arancio
Blue-Orange



Mod. 1438
Fucsia-Pistacchio
Fuchsia-Pistachio





TELMA DONNA WOMAN

Grembiule, regolabile con laccetti.
Apron, adjustable with strings.

Tessuto: poliestere 100%

Fabric: polyester 100%

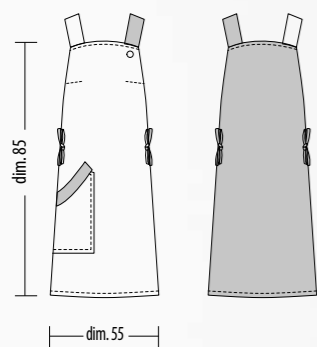
Taglia/Size: S,M,L

Doppio colore/Double color
(gr. 195 mq)

① **Mod. 1443**
Nero Gessato - Rosso (retro)
Black Pin Stripe-Red (back)

② **Mod. 1444**
Fucsia-Blu (retro)
Fuchsia/Blue (back)

③ **Mod. 1442**
Viola-Giallo (retro)
Violet-Yellow (back)





CIPRO UNISEX

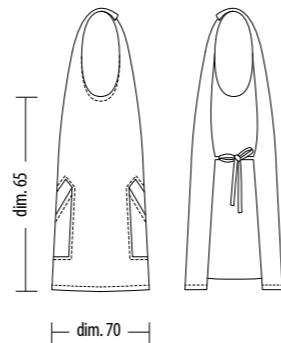


Grembiule con collo regolabile con velcro.
Apron with velcro adjustable collar.

Tessuto: poliestere 100%
Fabric: polyester 100%
Taglia unica / One Size Only

Fantasia/Patterned (gr. 160 mq)
Gessati/Pin Stripe (gr. 180 mq)
Tinta unita/One color (gr. 195 mq)

- ① **Mod. 260**_Turchese/Turquoise
- ② **Mod. 1083**_Fucsia/Fuchsia



Mod. 259
Giallo/ Yellow



Mod. 262
Arancio/ Orange



Mod. 1084
Bluette/Bright Blue



Mod. 1085
Nero/ Black



Mod. 1087
Pistacchio /Pistachio



Mod. 1089
Verdone/Deep Green



Mod. 1090
Rosso/ Red



Mod. 1091
Bordeaux/Wine Red



Mod. 1419
Blu/ Blue



Mod. 1420
Grigio/ Grey



Mod. 1622
Marrone/ Brown



Mod. 1086
Nero Gessato
Black Pin Stripe



Mod. 1088
Bordeaux Gessato
Wine Red Pin Stripe



Mod. 1417
Caffè/Coffee



Mod. 1418
Crêpes



SIMON UNISEX

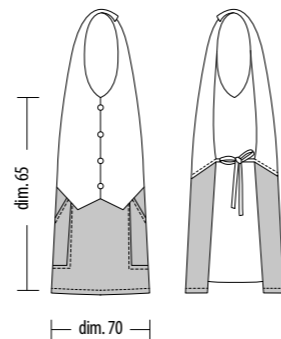


Grembiule con collo regolabile con velcro.
Apron with velcro adjustable collar.

Tessuto: poliestere 100%
Fabric: polyester 100%
Taglia unica/One Size Only

① **Mod. 1073**
Giornale-Nero
Newspaper Pattern-Black

② **Mod. 1416**
Bordeaux Gessato -Bordeaux
Wine Red Pin Stripe- Wine Red



Mod. 250
Riga Grigio Perla-Nero
Pearl Grey Stripe-Black



Mod. 251
Rosso Gessato -Nero
Red Pin Stripe-Black



Mod. 1069
Scozzese-Pistacchio
Tartan-Pistachio



Mod. 1075
Scozzese-Verdone
Tartan-Deep Green



Mod. 1071
Riga-Arancio
Stripe-Orange



Mod. 1076
Riga-Giallo
Stripe-Yellow



Mod. 1077
Scozzese-Turchese
Tartan-Turquoise



Mod. 1074
Scozzese- Bordeaux
Tartan- Wine Red



Mod. 255
Riga Gialla-Nero
Yellow Stripe-Black



Mod. 252
Giallo Scozzese-Nero
Yellow Tartan-Black



Mod. 254
Principe di Galles-Nero
Prince of Wales Check-Black



Mod. 256
Nero Gessato -Nero
Black Pin Stripe-Black

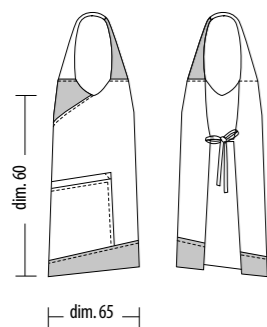


MALTA UNISEX

Grebiule con collo regolabile con velcro.
Apron with velcro adjustable collar.

Tessuto: poliestere 100%
Fabric: polyester 100%
Taglia Unica/ One Size Only

Doppio colore/Double color
(gr. 195 mq)



Mod. 1108
Arancio-Senape Gessato
Orange-Mustard Pin Strip



Mod. 1109
Pistacchio-Scozzese
Pistachio-Tartan



Mod. 1110
Bordeaux-Scozzese
Wine Red-Tartan



Mod. 1433
Blu-Arancio
Blue-Orange



Mod. 1434
Grigio- Riga Viola
Grey-Violet Stripe



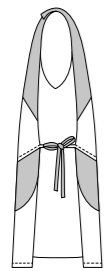
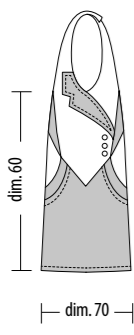


PANAREA UNISEX

Grembiule con collo regolabile con velcro.
Apron with velcro adjustable collar.

Tessuto: poliestere 100%
Fabric: polyester 100%
Taglia Unica/ One Size Only

Doppio colore
Double color
(gr. 195 mq)



Mod. 1112
Nero- Riga Grigio Perla
Black/ Pearl Grey Stripe



Mod. 1113
Rosso-Principe Di Galles
Red -Prince of Wales Check



Mod. 1114
Giallo-Scozzese
Yellow- Tartan



Mod. 1115
Bordeaux- Riga Spago
Wine Red -Cord Stripe



Mod. 1439
Rosso-Nero Gessato
Red-Black Pin Stripe



Mod. 1441
Fucsia-Blu
Fuchsia-Blue





OSLO UNISEX

Grembiule, con collo regolabile con velcro.
Apron, with velcro adjustable collar.

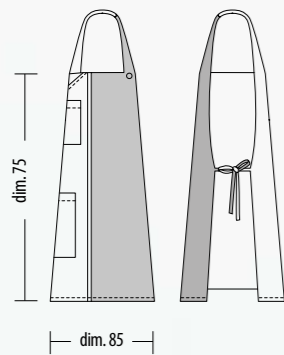
Tessuto: poliestere 100%
Fabric: polyester 100%
Taglia unica / One Size Only

Doppio colore/Double color
(gr. 195 mq)

Mod. 1410
Arancio- Marrone
Orange-Brown

Mod. 1406
Bordeaux- Grigio
Wine Red-Grey

Mod. 1408
Viola- Blu
Violet- Blue





OSLO UNISEX



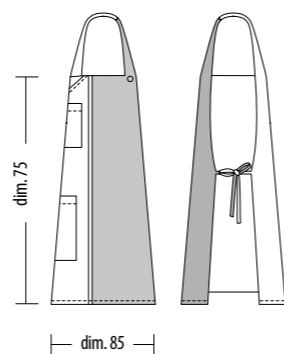
Grembiule, con collo regolabile con velcro.
Apron, with velcro adjustable collar.

Tessuto: poliestere 100%
Fabric: polyester 100%
Taglia unica /One Size Only

Doppio colore
Double color (gr. 195 mq)

① **Mod. 1412**
Marrone - Caffè
Brown -Coffee

② **Mod. 1414**
Marrone -Crêpes
Brown-Crêpes



ROGER UNISEX

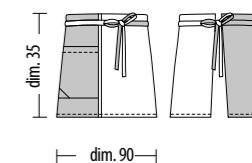


Tessuto: poliestere 100%
Fabric: polyester 100%
Taglia unica /One Size Only

Doppio colore
Double color (gr. 195 mq)

① **Mod. 1413**
Marrone - Caffè
Brown -Coffee

② **Mod. 1415**
Marrone -Crêpes
Brown-Crêpes





ROGER UNISEX

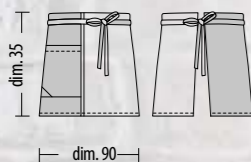
Tessuto: poliestere 100%
Fabric: polyester 100%
Taglia unica / One Size Only

Doppio colore/*Double color*
(gr. 195 mq)

Mod. 1411
Arancio- Marrone
Orange-Brown

Mod. 1407
Bordeaux- Grigio
Wine Red-Grey

Mod. 1409
Viola- Blu
Violet-Blue

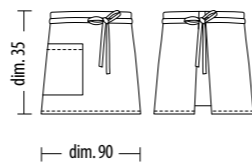




DAKOTA UNISEX

Tessuto: poliestere 100%
Fabric: polyester 100%
Taglia unica / One Size Only

Fantasia/Patterned (gr. 160 mq)
Gessati/Pin Stripe (gr. 180 mq)
Tinta unita/One color (gr. 195 mq)



Mod. 157
Bluette/Bright Blue



Mod. 158
Verdone/Deep Green



Mod. 159
Rosso/Red



Mod. 160
Bordeaux/Wine Red



Mod. 161
Nero/Black



Mod. 268
Turchese/Turquoise



Mod. 269
Arancio/Orange



Mod. 271
Giallo/Yellow



Mod. 1097
Pistacchio/Pistachio



Mod. 1428
Grigio/Grey



Mod. 1429
Blu/Blue



Mod. 1432
Fucsia/Fuchsia



Mod. 1623
Marrone/Brown



Mod. 1096
Bordeaux Gessato
Wine Red Pin Stripe



Mod. 1098
Nero Gessato
Black Pin Stripe

- ① **Mod. 1431**
Caffè/ Coffee
- ② **Mod. 1430**
Crêpes





ARGO UNISEX

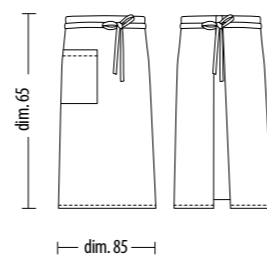


Tessuto: poliestere 100%
Fabric: polyester 100%
Taglia unica /One Size Only

Fantasia/Patterned (gr. 160 mq)
Gessati/Pin Stripe (gr. 180 mq)
Tinta unita/One color (gr. 195 mq)

① **Mod. 1094**
Bordeaux Gessato
Wine Red Pin Stripe

② **Mod. 154**
Bordeaux/ Wine Red



Mod. 152
Nero/Black



Mod. 153
Rosso/Red



Mod. 155
Bluette /Bright Blue



Mod. 156
Verdone / Deep Green



Mod. 266
Turchese/ Turquoise



Mod. 1093
Pistacchio/ Pistachio



Mod. 1425
Blu/ Blue



Mod. 264
Giallo/ Yellow



Mod. 265
Arancio/ Orange



Mod. 1092
Fucsia/ Fuchsia



Mod. 1424
Grigio/Grey



Mod. 1624
Marrone/ Brown



Mod. 1095
Nero Gessato
Black Pin Stripe



Mod. 1426
Crêpes



Mod. 1427
Caffè/ Coffee



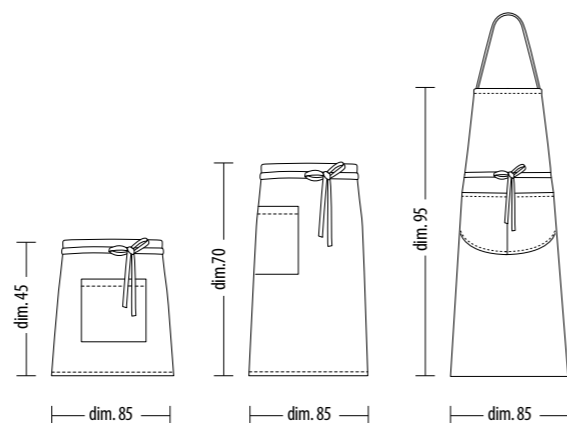
DAYTON, TORONTO, BARTON UNISEX



Tessuto: cotone 100%
Fabric: cotton 100%
Taglia Unica/ One Size Only

Tinta Unita/One color (gr. 200 mq)

- ① Barton _Mod. 198
- ② Toronto _Mod. 199
- ③ Dayton _Mod. 200

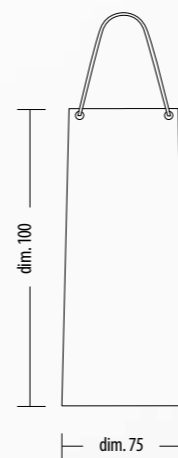


PVC UNISEX

Tessuto: poliestere - pvc
Fabric: polyester - pvc
Taglia Unica/ One Size Only

Mod. 105_ Giallo/ Yellow
Mod. 106_ Verdone/ Deep Green
Mod. 222_ Bianco /White

Tinta Unita/One color



ACCESSORI RISTORAZIONE & CUCINA

SERVICE
& KITCHEN
ACCESSORIES





MARVIN UNISEX

Tessuto: Poliestere 100%
Fabric: Polyester 100%
Taglie/Size: XS, S, M, L, XL, XXL

Tinta unita/One color (gr. 195 mq)
Gessati/Pin Stripe (gr. 180 mq)



Mod. 128
Nero/Black



Mod. 129
Rosso / Red



Mod. 130
Bordeaux/Wine Red



Mod. 131
Bluette/Bright Blue



Mod.134
Nero Gessato
Black Pin Stripe



Mod.1032
Bordeaux Gessato
Wine Red Pin Stripe





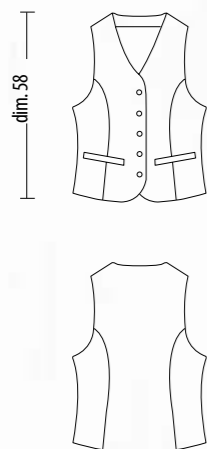
CAREN DONNA WOMAN

Gilet donna/Woman vest

Tessuto: Poliestere 100%
Fabric: Polyester 100%
Taglie/Size: XS, S, M, L, XL

Tinta unita/One color
(gr. 195 mq)

Mod. 1029_Panna/Cream
Mod. 1378_Nero/Black



IRIS GRACE GOLDA ESTEL DONNA WOMAN



Iris
Camicia donna elasticizzata manica lunga.
Stretch long sleeved women's shirt.

Tessuto: cotone 97% - spandex 3%
Fabric: cotton 97% - spandex 3%
Taglie/Size: XS, S, M, L, XL, XXL

Mod. 1372_Bianco/White
Mod. 1376_Nero/Black

Grace
Camicia donna manica lunga.
Long sleeved women's shirt.

Tessuto: poliestere 65% - cotone 35%
Fabric: polyester 65% - cotton 35%
Taglie/Size: S, M, L, XL

Mod. 1022_Bianco/White
Mod. 1024_Nero/Black



Golda
Polo donna manica corta.
Short sleeve women's polo.

Tessuto: cotone 100%
Fabric: cotton 100%
Taglie/Size: S, M, L, XL, XXL
Tinta unita/One color (gr. 200 mq)

Mod. 1146_Bianco/White
Mod. 1151_Nero/Black



Estel
Pantalone donna con chiusura lampo fianco sinistro.
Woman trousers with zip on the left side.

Tessuto: poliestere 100%
Fabric: polyester 100%
Taglie/Size: 38,40,42,44,46,48,50,52,54
Tinta unita/One color (gr. 170 mq)

Mod. 1360_Nero/Black



BORIS MORRIS DANIEL

UOMO/MAN

Boris
Camicia uomo manica lunga.
Long sleeved men's shirt.
Tessuto: poliestere 65% - cotone 35%
Fabric: polyester 65% - cotton 35%
Taglie/Size: 37,38,39,40,41,42,43,44,45,46,47,48

Mod. 122_Bianco/White
Mod. 1018_Nero/Black



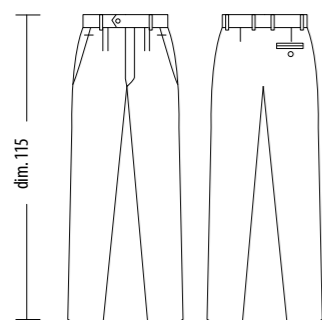
Morris
Polo uomo manica corta.
Short sleeve men's polo.
Tessuto: cotone 100%
Fabric: cotton 100%
Taglie/Size: S, M, L, XL, XXL
Tinta unita/One color (gr. 200 mq)

Mod. 1139_Bianco/White
Mod. 1144_Nero/Black



Daniel
Pantalone uomo classico, foderato davanti fino al ginocchio.
Classic men's trousers, in front lined up to the knee.
Tessuto: poliestere 100%
Fabric: polyester 100%
Taglie/Size: 44,46,48,50,52,54,56,58,60
Tinta unita/One color (gr. 170 mq)

Mod. 1009_Nero/Black



ACCESSORI ACCESSORIES

UNISEX



ROY
Fascia elastica regolabile con velcro
poliestere 82% /gomma 18%

Elastic cummerbund adjustable with velcro.
Polyester 82% / rubber 18%

Taglia Unica
One Size Only
Dim. H 15 x L 105



Mod. 226
Nero/Black

BERG
Guanti in cotone 100%
Cotton Gloves 100%
Taglie/Size: M, L



Mod. 221
Bianco/White

Vidal
T-shirt unisex manica corta
Unisex t-shirt short sleeve

Tessuto: cotone 100%
Fabric: cotton 100%
Taglie/Size: S, M, L, XL, XXL
Tinta unita/One color (gr. 150 mq)

Mod. 1174_Bianco/White





LIAM UNISEX

Berretto con elastico posteriore.
Beret with back elastic.

Tessuto: Cotone 100%

Fabric: Cotton 100%

Taglia unica /One Size Only

Fantasia/Patterned (gr. 200 mq)
Gessato/Pin Stripe (gr. 190 mq)
Tinta unita/One color (gr. 190 mq)



Mod. 1695
Teschio /Skull



Mod. 1696
Italia/ Italy



Mod. 1697
Cucina/ Kitchen



Mod. 1698
Supereroi/ Superheroes



Mod. 1699
Game over



Mod. 1700
Black & White



Mod. 1703
Giornale/ Newspaper



Mod. 1704
Diavoletto/ Devil



Mod. 1701
Nero Gessato /Black Pin Stripe



Mod. 1702
Nero/ Black



-
-
-
-
-
-

Bianchi
White

Colorati
Colored

TOLEDO UNISEX

Bandana.
Tessuto: Cotone 100%
Fabric: Cotton 100%
Taglia unica /One Size Only

Tinta unita/One color (gr. 190 mq)
 Gessato/Pin Stripe (gr. 190 mq)
 Fantasia/Patterned (gr. 200 mq)



Mod. 295
Bianco/White



Mod. 1505
Nero/Black



Mod. 292
Nero Quadri Bianchi
Black White Checks



Mod. 293
Pied de Poule



Mod. 294
Jeans



Mod. 1211
Città/ City



Mod. 1221
Giornale
Newspaper



Mod. 1502
Diavoletto
Devil



Mod. 1503
New York



Mod. 1224
Bordeaux Fantasia
Wine Red Patterned



Mod. 1226
Nero Fantasia
Black Patterned



Mod. 1228
Riga Bordeaux
Wine Red Stripe



Mod. 1677
Teschio
Skull



Mod. 1678
Italia
Italy



Mod. 1679
Cucina
Kitchen



Mod. 1680
Supereroi
Superheroes



Mod. 297
Grigio Gessato
Grey
Pin strip



Mod. 1504
Nero Gessato
Black
Pin Stripe



Mod. 1595
Blu Gessato
Blue
Pin strip



Mod. 1681
Game over



Mod. 1682
Black & White



CARTER UNISEX

Bandana.

Tessuto: Poliestere 65% - cotone 35%

Fabric: Polyester 65% - cotton 35%

Taglia unica / One Size Only

Fantasia/Patterned (gr.210 mq)



Mod. 1554
Food



Mod. 1556
Paprika



Mod. 1558
Mani/ Hands



Mod. 1555
Posate/ Cutlery



Mod. 1557
Poker





ASPEN UNISEX

Bandana.

Tessuto: Poliestere 100%
Fabric: Polyester 100%
Taglia unica / One Size Only

Tinta unita/One color (gr. 195 mq)
Fantasia/Patterned (gr. 160 mq)
Gessati/Pin Stripe (gr. 180 mq)



Mod. 1210
Fucsia
Fuchsia



Mod. 1212
Giallo
Yellow



Mod. 1213
Verdone
Deep Green



Mod. 1214
Arancio
Orange



Mod. 1215
Bluette
Bright Blue



Mod. 1216
Pistacchio
Pistachio



Mod. 1499
Bianco
White



Mod. 1500
Blu
Blue



Mod. 1501
Grigio
Grey



Mod. 1217
Rosso
Red



Mod. 1218
Turchese
Turquoise



Mod. 1219
Bordeaux
Wine Red



Mod. 1492
Crêpes



Mod. 1493
Caffè/ Coffee



Mod. 1220
Nero
Black



Mod. 1497
Viola
Violet



Mod. 1498
Marrone
Brown



Mod. 1494
Rosso Gessato
Red Pin Stripe



Mod. 1495
Nero Gessato
Black Pin Stripe



Mod. 1496
Bordeaux Gessato
Wine Red Pin Stripe



Bianchi
White



Colorati
Colored



IMATRA UNISEX

Tamburello con elastico posteriore.
Tambour with back elastic.

Tessuto: Cotone 100%

Fabric: Cotton 100%

Taglia unica /One Size Only

Tinta unita/One color (gr. 190 mq)

Gessato/ Pin Stripe (gr. 190 mq)

Fantasia/Patterned (gr. 200 mq)



Mod. 1230
Bianco/ White



Mod. 1509
Nero/ Black



Mod. 1239
Grigio Gessato
Grey Pin Stripe



Mod. 1508
Nero Gessato
Black Pin Stripe



Mod. 1229
Bordeaux Fantasia
Wine Red Patterned



Mod. 1237
Nero Fantasia
Black Patterned



Mod. 1231
Città/City



Mod. 1232
Giornale/Newspaper



Mod. 1235
Jeans



Mod. 1241
Riga Bordeaux
Wine Red Stipe



Mod. 1243
Nero Quadri Bianchi
Black White Checks



Mod. 1506
Diavoletto/Devil



Mod. 1507
New York





Bianchi
White



Colorati
Colored



ATON UNISEX

Fazzoletto/ Handkerchief

Tessuto: Cotone 100%
Fabric: Cotton 100%
Taglia unica / One Size Only

Tinta unita/One color (gr. 190 mq)
Gessato/ Pin Stripe (gr. 190 mq)
Fantasia/Patterned (gr. 200 mq)



Mod. 1253
Nero Quadri Bianchi
Black White Checks



Mod. 1254
Bianco/ White



Mod. 1255
Rosso/ Red



Mod. 1256
Bluette/ Bright Blue



Mod. 1257
Giallo/ Yellow



Mod. 1517
Nero/ Black



Mod. 1259
Riga Bordeaux
Wine Red Stripe



Mod. 1261
Nero Fantasia
Black Patterned



Mod. 1264
Bordeaux Fantasia
Wine Red Patterned



Mod. 1265
Jeans



Mod. 1266
Giornale/ Newspaper



Mod. 1267
Città/ City



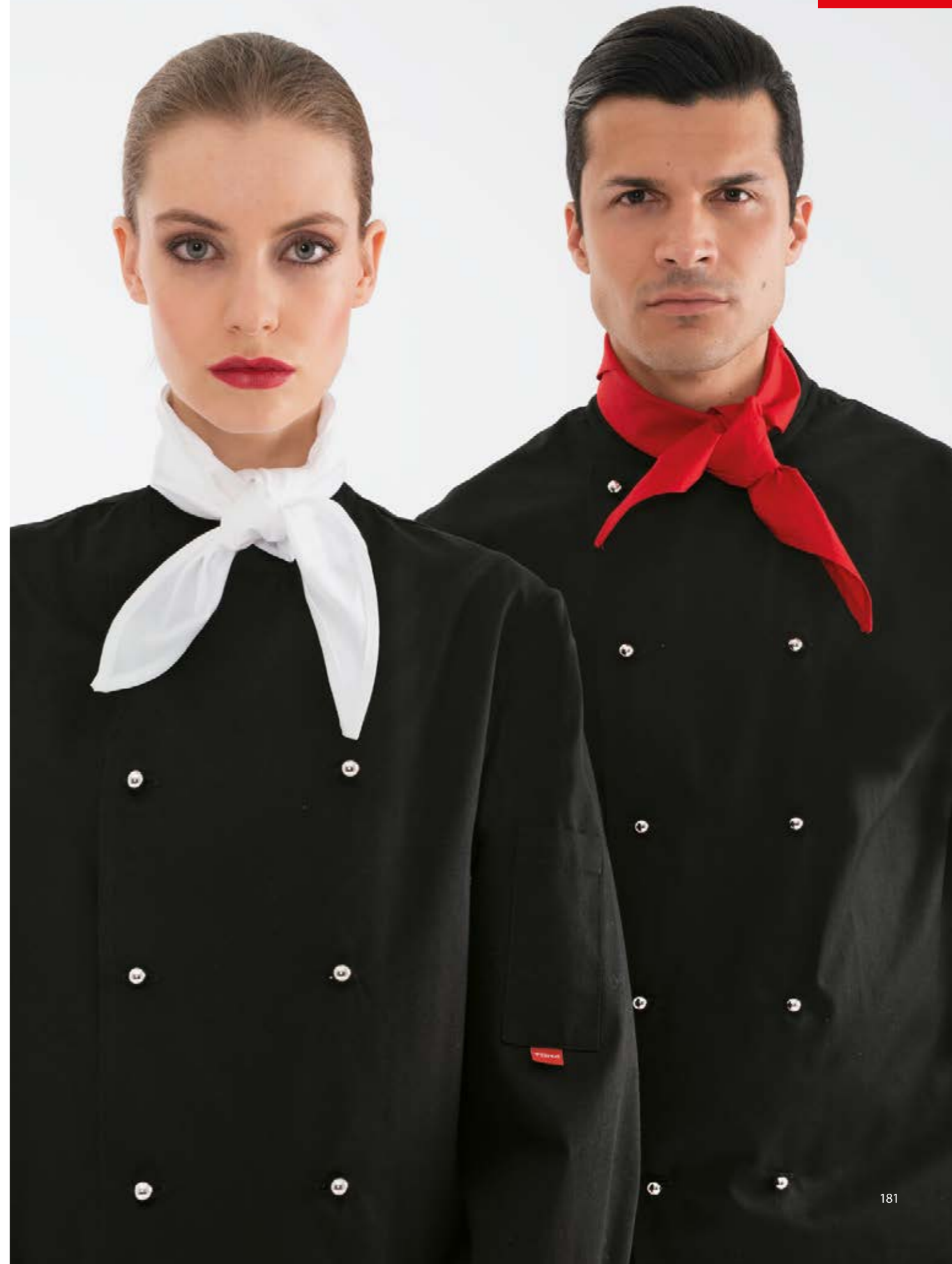
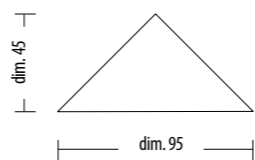
Mod. 1514
Diavolletto/ Devil



Mod. 1515
New York



Mod. 1516
Nero Gessato / Black Pin Stripe





WHITE LINE UNISEX



Berretto con elastico posteriore.
Beret with back elastic.

Tessuto: poliestere 65% - cotone 35%
Fabric: polyester 65%- cotton 35%
(gr. 140 mq)

- ① **Indo_Mod.1270** con rete/ with net
- ② **Adam_Mod.1271**

Bustina regolabile con velcro.
Forage cap adjustable with velcro.

Tessuto: cotone 100%
Fabric: cotton 100%
(gr. 160 mq)

- ③ **Alvin_Mod.1268**
- ④ **Enea_Mod.1269** con rete/ with net

Cuffia donna con elastico posteriore.
Woman bonnet with back elastic.

Tessuto: poliestere 65% - cotone 35%
Fabric: polyester 65%- cotton 35%
(gr. 140 mq)

- ⑤ **Ema_Mod. 210**
- ⑥ **Iside_Mod.211** con rete/ with net





CRUZ UNISEX

Bustina regolabile con velcro.
Forage cap adjustable with velcro.

Tessuto: Poliestere 100%
Fabric: Polyester 100%

Taglia unica / One Size Only

Tinta unita/One color (gr. 195 mq)
Fantasia/Patterned (gr. 160 mq)
Gessato/ Pin Stripe (gr. 180 mq)



Mod. 301
Turchese/ Turquoise



Mod. 302
Giallo/ Yellow



Mod. 303
Arancio/ Orange



Mod. 1198
Pistacchio/ Pistachio



Mod. 1204
Rosso/ Red



Mod. 1205
Bluette/ Bright Blue



Mod. 1206
Fucsia/ Fuchsia



Mod. 1207
Nero/ Black



Mod. 1208
Bordeaux/ Wine Red



Mod. 1209
Verdone/ Deep Green



Mod. 1488
Viola/ Violet



Mod. 1489
Marrone/ Brown



Mod. 1490
Blu/ Blue



Mod. 1491
Grigio/ Grey



Mod. 1485
Crêpes



Mod. 1486
Caffè/ Coffee



Mod. 1202
Nero Gessato
Black Pin Stripe



Mod. 1203
Bordeaux Gessato
Wine Red Pin Stripe



Mod. 1487
Rosso Gessato
Red Pin Stripe





MIAMI UNISEX

Cappello con elastico posteriore.
Hat with back elastic.

Tessuto: Poliestere 100%
Fabric: Polyester 100%

Taglia unica / One Size Only

Tinta unita/One color (gr. 195 mq)
Fantasia/Patterned (gr. 160 mq)
Gessato/ Pin Stripe (gr. 180 mq)



Mod. 1188
Pistacchio/ Pistachio



Mod. 1189
Arancio/ Orange



Mod. 1190
Fucsia/ Fuchsia



Mod. 1191
Turchese/ Turquoise



Mod. 1192
Verdone/ Deep Green



Mod. 1193
Bordeaux/ Wine Red



Mod. 1194
Nero/ Black



Mod. 1195
Giallo/ Yellow



Mod. 1196
Bluette/ Bright Blue



Mod. 1197
Rosso/ Red



Mod. 1480
Viola/ Violet



Mod. 1481
Marrone/ Brown



Mod. 1482
Bianco/ White



Mod. 1483
Blu/ Blue



Mod. 1484
Grigio/ Grey



Mod. 1475
Crêpes



Mod. 1476
Caffè/ Coffee



Mod. 1477
Rosso Gessato
Red Pin Stripe



Mod. 1478
Nero Gessato
Black Pin Stripe



Mod. 1479
Bordeaux Gessato
Wine red Pin Stripe





MILLER UNISEX



Cappello baseball regolabile.
Baseball cap adjustable.

Tessuto: cotone 100%
Fabric: cotton 100%
Taglia unica / One Size Only



Mod. 1179
Rosso/ Red



Mod. 1180
Verde/ Green



Mod. 1181
Bluette/ Bright Blue



Mod. 1182
Bianco/ White



Mod. 1183
Nero/ Black



LORD UNISEX



Papillon/ Bow-tie
Tessuto: poliestere 100%
Fabric: polyester 100%

Taglia unica
One Size Only



Mod. 1282
Verdone/ Deep Green



Mod. 1283
Giallo/ Yellow



Mod. 1284
Bluette/ Bright Blue



Mod. 1285
Bianco/ White



Mod. 1286
Bordeaux/ Wine-Red



Mod. 1287
Rosso/ Red



Mod. 1288
Nero/ Black



MARTINA

DONNA/WOMAN



Cravattino donna/ *Women's tie.*

① **Mod. 1291_Bordeaux/ Wine-Red**

Tessuto: Poliestere 100%
Fabric: Polyester 100%
Taglia unica / One Size Only



Mod. 1289
Nero/ *Black*



Mod. 1290
Bluette/ *Bright Blue*



Mod. 1292
Blu/ *Blue*



Mod. 1293
Giallo/ *Yellow*



Mod. 1294
Grigio/ *Grey*

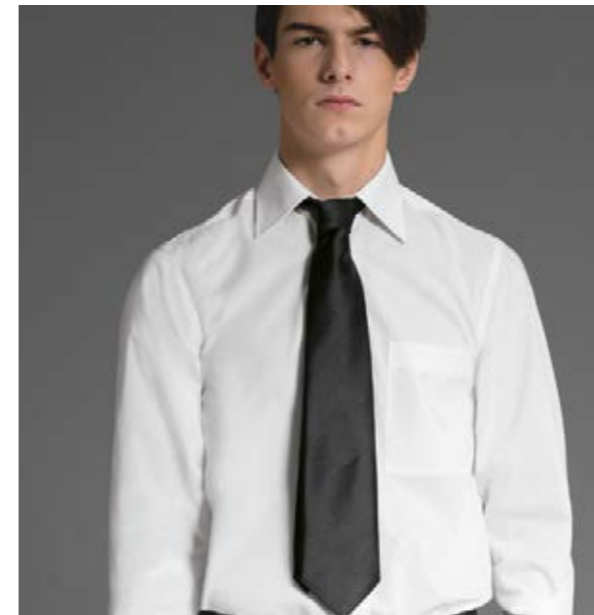


Mod. 1295
Rosso/ *Red*



DUVAL

UOMO/MAN



Cravatta uomo/ *Men's tie.*

① **Mod. 1278_Nero/ Black**

Tessuto: Poliestere 100%
Fabric: Polyester 100%
Taglia unica / One Size Only



Mod. 1275
Bordeaux
Wine-Red



Mod. 1276
Grigio/ *Grey*



Mod. 1277
Giallo/ *Yellow*



Mod. 1279
Bluette/ *Bright Blue*



Mod. 1280
Rosso/ *Red*

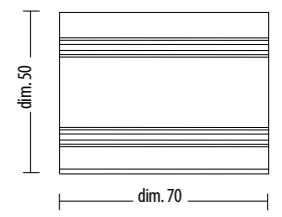


Mod. 1281
Blu/ *Blue*

CUCINA ACCESSORI KITCHEN ACCESSORIES



IGOR
Tessuto: cotone100%
Fabric: cotton 100%
 Torcione/Dish cloth
Mod. 1318 _Bianco/White
 (confezione da 6 pz/ 6 pieces package)



Bottoni estraibili; confezione da 12 bottoni.
 Extractable buttons; 12 buttons package



Mod.1302
Oro/Gold



Mod.1303
Argento/Silver



Mod.1304
Bianco/White



Mod.1305
Giallo/Yellow



Mod.1306
Rosso/Red



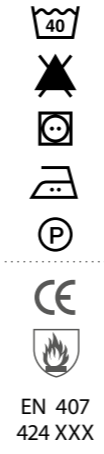
Mod.1307
Bluette/Bright Blue



Mod.1308
Nero/Black



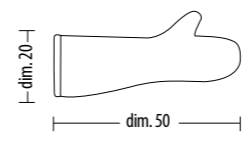
Mod.1519
Grigio Antracite
Grey Anthracite



EN 407
424 XXX

GOLIA FALCO UNISEX

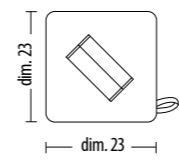
Lavaggio max 25 cicli
Washing cycles max 25



GOLIA
 DPI II° Categoria 89/686/CEE
Tessuto: cotone100% ignifugo
Fabric: 100% cotton flame retardant
Taglia Unica/ One Size Only

Guanto forno professionale,
 imbottito con Thermore®.
 Professional oven glove,
 Thermore® padded.

Mod. 215 _Verde/Green



FALCO
 DPI II° Categoria 89/686/CEE
Tessuto: cotone100% ignifugo
Fabric: 100% cotton flame retardant
Taglia Unica/ One Size Only

Presona cucina professionale,
 imbottita con Thermore®.
 Large professional kitchen pot holder,
 Thermore® padded.

Mod. 216 _Verde/Green

SCARPE SHOES UNISEX

Scarpa/ Shoe:
Mod. 308_Bianco/White
Mod. 1520_Nero/Black
Omologato/ Approved:
EN ISO 20345:2011 S1 SRC

Zoccolo/ Clogs:
Mod. 309_Bianco/White
Mod. 1521_Nero/Black
Omologato/ Approved:
EN ISO 20345:2011 SB EA FO SRC



Scarpa antistatica
Antistatic footwear



Assorbimento dell'energia al tallone
Energy absorption of heel region



Suola resistente agli olii ed ai carburanti
Sole unit resistant to oils and fuels



Tomaia in materiale traspirante
Breathable upper material



Suola antiscivolo
Anti-slip sole



Lavabile in lavatrice a 40°C
Machine washable at 40°C



Puntale resistente a 200J
Toecap resistant to 200J

Taglie: 35/36/37/38/39/40/41/42/43/44/45/46/47
Size: 2/3/4/5/6/7/8/9/10/11/12/13/14



Mod. 308



Mod. 309



Mod. 1520



Mod. 1521

ZOCCOLO CLOGS UNISEX

Mod. 218_Bianco/White

Omologato/ Approved:
EN ISO 20347:2012 OB A E SRC

Ospedaliero/Hospital
Antiscivolo/No-slip
Anatomico/Anatomical
Antistatico/Antistatic

Sterilizzabile a 135°
Sterilizable at 135 degrees

Taglie: 35-36 / 37-38 / 39-40 / 41-42 / 43-44 / 45-46
Size: 2-3 / 4-5 / 6-7 / 8-9 / 10-11 / 12-13



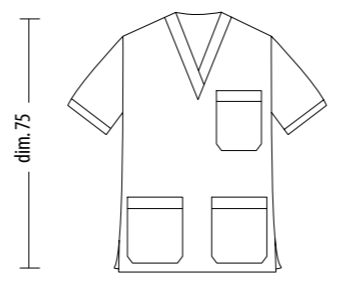
-
-
-
-
- Bianchi
White
-
- Colorati
Colored
-

ZEUS UNISEX

Casacca con tasche laterali (2) e taschino sul petto (1).
Coat with side pockets (2) and breast pocket (1).

Tessuto: poliestere 65% - cotone 35%
Fabric: polyester 65% - cotton 35%
Taglie/Size: XS, S, M, L, XL, XXL, XXXL

Tinta unita/One color (gr. 195 mq)



Mod. 1570
Nero/Black



Mod. 1571
Rosso/Red



Mod. 1572
Giallo/Yellow



Mod. 1573
Bianco/White



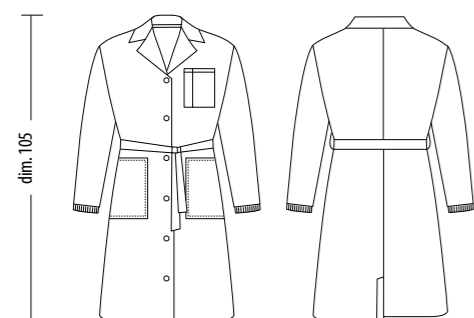


EVITA& ITACO

CAMICI/ OVERALLS

Tinta unita/One color: bianco/white
Taglie/Size: S, M, L, XL, XXL

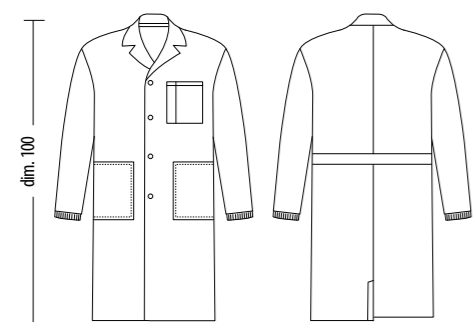
Tasche laterali (2) e taschino sul petto (1).
Side pockets (2) and breast pocket (1).



Evita _Donna/ Woman
 Cinta in vita ed elastico ai polsi.
Waist belt and elastic wrist.

Tessuto: poliestere 65% - cotone 35%
Fabric: polyester 65% - cotton 35%

Mod. 196 (gr. 140 mq)



Itaco _Uomo /Man
 Elastico ai polsi/ Elastic wrist.

Tessuto: poliestere 65% - cotone 35%
Fabric: polyester 65% - cotton 35%

Mod. 197 (gr. 140 mq)





EMILY

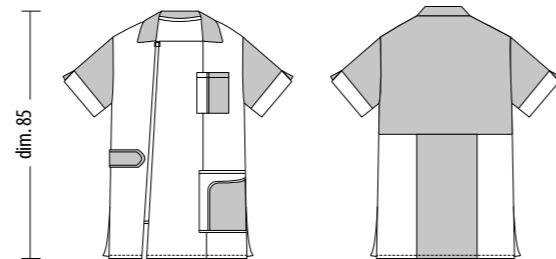
DONNA/WOMAN

Casacca con tasca lato sinistro (1),
taschino sul petto (1) e chiusura lampo.
Coat with left side pocket (1)
breast pocket (1) and zip closure.

Tessuto: Poliestere 65% - cotone 35%

Fabric: Polyester 65% - cotton 35%

Taglie/Size: S, M, L, XL, XXL



Mod. 1047
Riga Blu/Blue Stripe



Mod. 1048
Riga Senape/Mustard Stripe



Mod. 1049
Riga Bordeaux/Wine Red Stripe



Mod. 1600
Riga Verde/Green Stripe



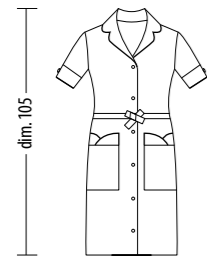


ALBA/DORIS/GUNA DONNA/WOMAN

Vestitino con cinta in vita e tasche laterali (2)
Overall with waist belt and side pockets (2)

Tessuto: poliestere 65% - cotone 35%
Fabric: polyester 65% - cotton 35%
Taglie/Size: S, M, L, XL, XXL

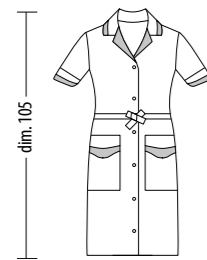
(gr. 140 mq)



Alba_Mod. 1055
Riga Blu/ Blue Stripe



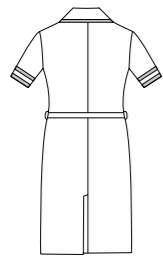
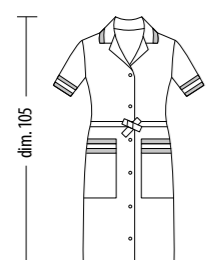
Doris_Mod. 1056
Riga Verde/ Green Stripe



Guna_Mod. 1057
Riga Bordeaux
Wine Red Stripe



Guna_Mod. 1058
Riga Senape
Mustard Stripe





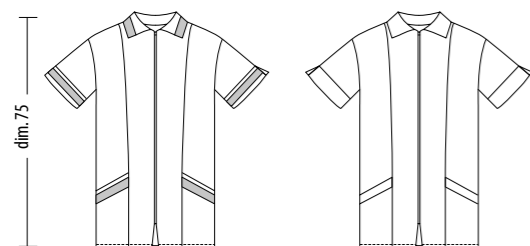
GRETA & SONIA

DONNA/ WOMAN

Tessuto: poliestere 65% - cotone 35%
Fabric: polyester 65% - cotton 35%

① ② **GRETA**
Casacca con tasche laterali (2) e chiusura lampo.
Coat with side pocket (2) and zip closure.

Taglie/Size: S, M, L, XL
Tinta unita/One color



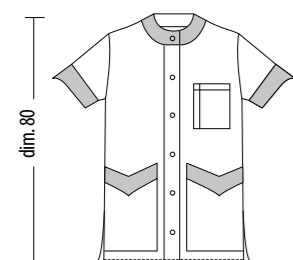
① **Greta_Mod. 1043**



② **Greta_Mod. 1044**

SONIA
Casacca con tasche laterali (2) e taschino sul petto (1).
Coat with side pockets (2) and breast pocket (1).

Taglie/Size: S, M, L, XL, XXL



Sonia_Mod. 176



PACKAGING PRODOTTO/ PRODUCT

SOLUZIONI CREATIVE PER IL PACKAGING E DISPLAY DEL PRODOTTO.
CREATIVE SOLUTIONS FOR PRODUCT PACKAGING.



TABELLA TAGLIE SIZE CHART

DONNA/WOMEN	XS	S	M	L	XL	XXL
IT	36-38	40-42	44-46	48-50	52-54	56-58
GB	28-30	32-34	36-38	40-42	44-46	48-50
FR	34-36	38-40	42-44	46-48	50-52	54-56
DE	32-34	36-38	40-42	44-46	48-50	52-54
ES	26-28	30-32	34-36	38-40	42-44	46-48

UOMO/MEN	S	M	L	XL	XXL
IT	46-48	50-52	54-56	58-60	62-64
GB	36-38	40-42	44-46	48-50	52-54
FR	42-44	46-48	50-52	54-56	58-60
DE	46-48	50-52	54-56	58-60	62-64
ES	36-38	40-42	44-46	48-50	52-54

COLLETO UOMO MEN COLLAR	XS	S	M	L	XL	XXL
IT	36-37	38-39	40-41	42-43	44-45	46-47
INT	13 1/2 -14	14 1/2 -15	15 1/2 -16	16 1/2 -17	17 1/2 -18	18 1/2 -19

UNISEX	XS	S	M	L	XL	XXL	XXXL
IT	42-44	46-48	50-52	54-56	58-60	62-64	66-68
GB	32-34	36-38	40-42	44-46	48-50	52-54	56-58
FR	38-40	42-44	46-48	50-52	54-56	58-60	62-64
DE	42-44	46-48	50-52	54-56	58-60	62-64	66-68
ES	32-34	36-38	40-42	44-46	48-50	52-54	56-58

SCARPE/SHOES													
EU	35	36	37	38	39	40	41	42	43	44	45	46	47
GB	2	3	4	5	6	7	8	9	10	11	12	13	14

Le taglie in tabella sono da considerarsi indicative e possono variare a seconda del modello e della vestibilità dello stesso legati alla modellistica e all'attualità.

The sizes in the table are to be considered indicative and may differ depending on the model and fit linked to design and current trends.

NORME DI LAVAGGIO

WASHING INSTRUCTIONS

Per ottenere una migliore durata nel tempo dei capi acquistati, si prega di seguire le norme di lavaggio indicate sull'etichetta. Toma srl non risponderà di usure o scolorimenti causati dal non rispetto delle norme di lavaggio.

To ensure a longer-lasting use of the purchased garments, we recommend you to follow care instructions on the label. Toma S.r.l. is not responsible for wear or fading caused by the non-observance of the care instructions.

LAVAGGIO/WASHING



Non lavare.
Do not wash.



STIRATURA CON FERRO IRONING



Bassa temperatura massimo 110° C.
Low temperature maximum 110° C.



Media temperatura massimo 150° C.
Medium temperature maximum 150° C.



Non stirare.
Do not iron.

ASCIUGATURA/DRYING



Bassa temperatura.
Low temperature.



Non in asciugatrice.
Do not dry in dryer.

CANDEGGIO/BLEACHING



Candeggiare.
Bleach.



Non candeggiare.
Do not bleach.

PULITURA A SECCO DRY CLEANING



Lavaggio a secco con tutti i solventi, escluso la trielina.
Dry clean with all solvents except trichloroethylene.



Non pulire a secco.
Do not dry clean.

Il presente catalogo è tutelato dalla legge sui diritti d'autore (Legge 22/04/1941 n° 1485) e ne è quindi proibita ogni forma di riproduzione sia totale che parziale; Tutti i colori dei tessuti rappresentati sono puramente indicativi, si declina ogni responsabilità per eventuali errori. L'azienda si riserva il diritto di apportare modifiche ai propri tessuti in qualsiasi momento e senza alcun obbligo di preavviso.

This catalogue is protected by copyright law (Italian law 1485 of 22/04/1941) and reproduction of all or part of it is strictly forbidden. All the colors of the fabrics represented in this catalogue are purely indicative, Toma srl assumes no responsibility for errors. The company reserves the right to make changes on its fabrics in any moment and without prior notice.